

Import Points CE 2.0

Import Points CE is an open source mVBA applet which runs in MicroStation CONNECT Edition. The applet enables users to import point data from text files of various formats. Upon execution of the applet's *Place* command, the source (point) file's location data and accompanying fields are transferred to the dgn file with user-specified data mappings and graphics.

Installation

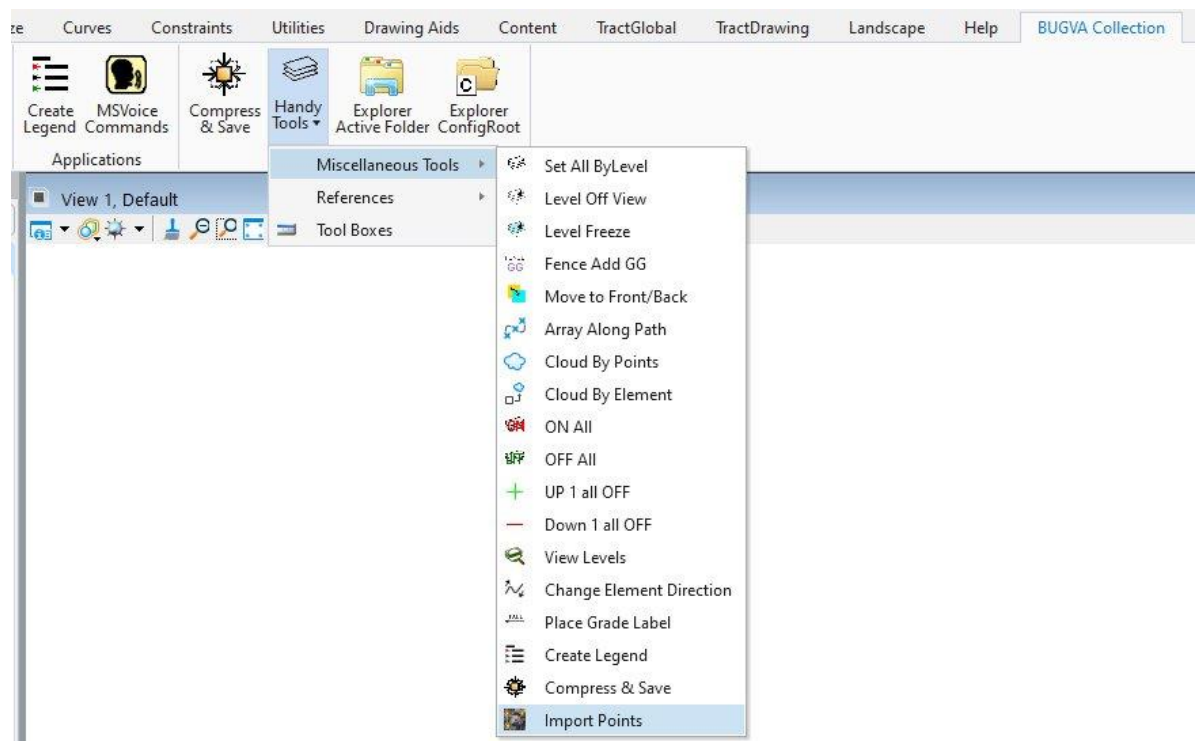
The applet may be installed anywhere the user has read access. Typical locations include:

- C:\ProgramData\Bentley\MicroStation CONNECT Edition\Configuration\Organization\Macros
- C:\ProgramData\Bentley\MicroStation CONNECT Edition\Configuration\WorkSpaces\WorkspaceName\Standards\Macros
- C:\ProgramData\Bentley\MicroStation CONNECT Edition\Configuration\WorkSpaces\ WorkspaceName \WorkSets\WorkSetName\Standards\Macros

To install, unzip the contents of the distribution file to a folder of your choice. It is important all three files **Import Points CE.mvba**, **Import Points CE.pdf**, and **Point Templates.dgnlib** reside in the same folder within the **MS_VBASEARCHDIRECTORIES** folders.

Start-up

The applet may be started via the Miscellaneous Tools on the BUGVA ribbon:



A key-in may also be used to launch the applet if it is in a MS_VBASEARCHDIRECTORIES folder:

```
vba run [Import Points CE] StartImportPoints
```

Import Points CE 2.0

General Workflow

Workflow within the primary form, *Import Points*, generally moves from left to right and top to bottom:

1. Select the Source File
2. Define the Output
3. Select a cell (if required)
4. Select an Item (if required)
5. Ensure Settings are properly adjusted
6. Map ordinates and data by dragging items from the Source Fields and dropping them on the Destination Fields
7. Select **Place**

OPERATION NOTES:

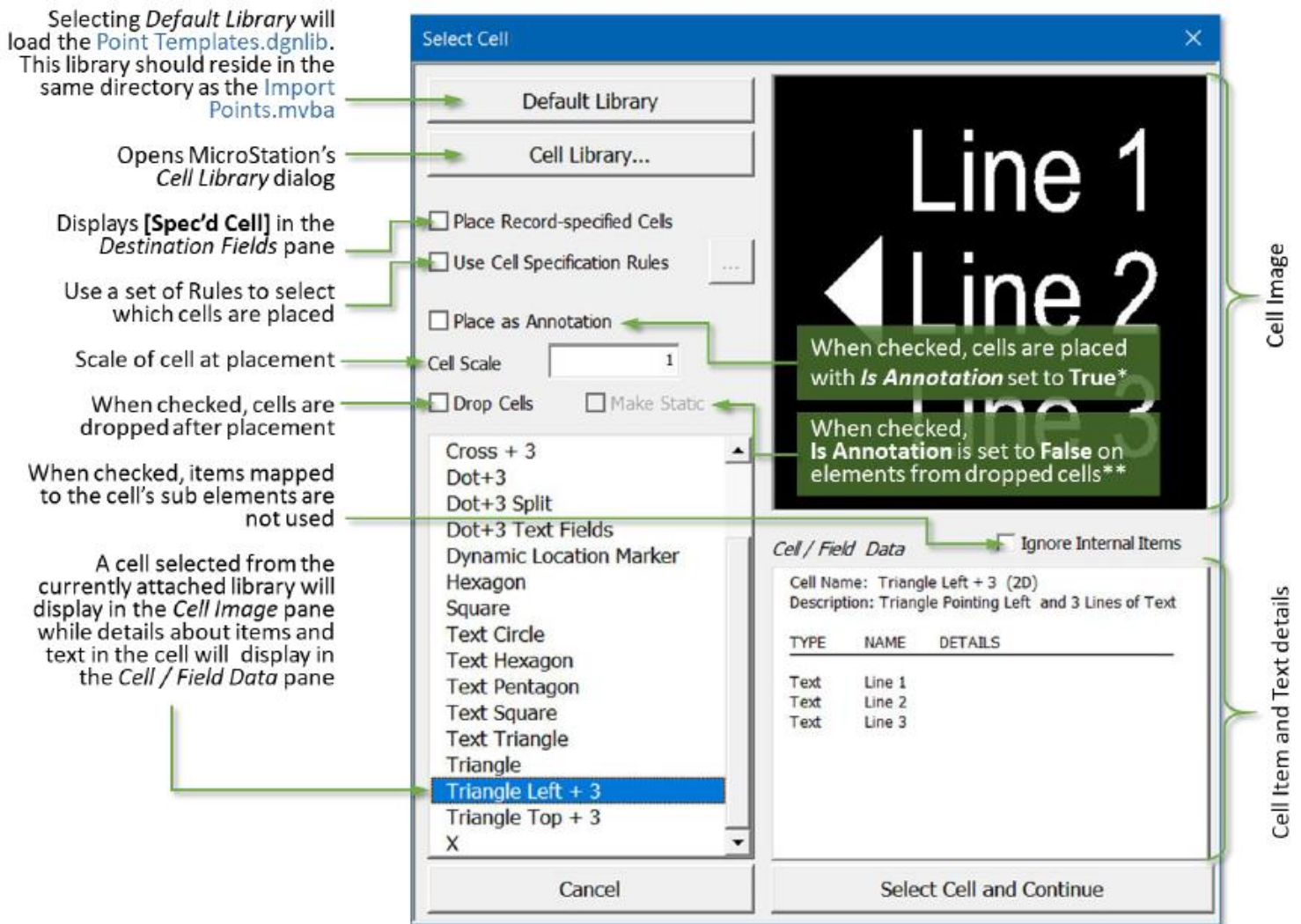
- The Source Fields pane accommodates up to 16 source fields. Files containing a greater number of fields may be used, but only 16 will be loaded, consequently it may be necessary to “pre-process” the source file in order to remove unnecessary fields (columns).
- There is no requirement that all the source or destination fields be used, though the **X** and **Y** fields along with the **[Spec'd Cell]** and **[Rule Spec'd Cell]** fields (when present) are mandatory.
 - The **[Spec'd Cell]** field is enabled by checking “Place Record-specified Cells.” It is used to place a cell named in a record at the location specified by the record. If the cell cannot be located, a user-defined default cell will be placed instead.
 - The **[Rule Spec'd Cell]** field is enabled by checking “Use Cell Specification Rules.” When selected the contents of a field and application of a rule (e.g. if the value of the field is > X place cell “Y” or if the field contains the text “ABC” place the cell named “Z”) determine the cell placed at the location specified by the record. If the cell cannot be located, a user-defined default cell will be placed instead.
- The “Output to” drop-down includes the following options:
 - **Cell** – Places cell graphics, drivable text, and items attached to the cell’s internal objects and the cell instance (model in the cell library).
 - **Cell + Item** – The same as above with the addition of item data from the active design file.
 - **Point** – Places point elements (zero length lines).
 - **Point + Item** – Places point elements and item data from the active design file.

Import Points CE 2.0

- **Text Node** – Places multi-line text (type 7 text nodes)
- **Cell + Fields** – The same as **Cell**, with the addition of text fields driven by items attached to internal cell geometry
- **Line String** – Places a line string from points in the source file in the order encountered.

Select Cell:

From the *Select Cell* form, users may browse cells and examine the “mappable” items and text content.



* Only cells that are “annotative” (where **Annotation Purpose** is set to true) may have the **Is Annotation** property set to true. This setting does not affect the **Is Annotation** properties of the cell's component elements.

** When *Make Static* is selected, setting the active model's annotation scale to 1 and using *Cell Scale* to size the geometry will prevent shifting of annotative text when the cell is dropped.

Import Points CE 2.0

Select Item

Two of the “Output to” options, *Cell + Item* and *Point + Item*, allow the user to attach item data from libraries accessible via the active file. The *Select Item* form is used to browse libraries and examine the properties of items.

After placement, items attached to cells and points are assessable via the *Properties* dialog along with standard element properties.

Properties in item types may be used in reporting, or to change the apparent symbology of elements via display rules.

Supported item property datatypes:

- Boolean
- DateTime
- Double
- Integer
- String

Note: *Property arrays* and the item datatype *point* are not currently supported.

NAME	TYPE	DEFAULT VALUE
A	String	
B	String	
C	String	
D	String	
E	String	
F	String	

Settings/About

When checked, the first row in the source file is considered a header and is not processed as a point

When checked, treats point data as Latitude, Longitude and Elevation and converts it to the current GCS

Field delimiter in source records

Determines how empty and unmapped text and numeric fields are handled

Restores the applet's default settings

Documentation on how to use Import Points CE

Settings/About

☒ Input File has Header Row

☒ Coordinates are in Latitude, Longitude and

Angular Format: DDD.dddddd

Delimiter Character: Comma

Blank/Undefined Fields Substitutions:

☒ Text: (Undefined)

☒ Number: 0

Default Z: 500

☐ Remove Empty Text Objects

Restore Default Settings

Settings About

Documentation

Close

Supported Angular formats:

DDD.dddddd – Decimal degrees

DDD.MM.SSsssss – Degrees, minutes and seconds delimited by a decimal point, where the seconds have an implied decimal between the second and third numerals

DDD°MM' .SS.ss"N – Degrees, minutes, seconds and direction (N, S, E, W)

Removes empty text objects from cells as well as blank lines from text nodes

Important Information about the software

Import Points CE 2.0

Cell Selection Rules

Specific cells may be placed based on field values that are evaluated against user-defined rules. The general syntax is as follows:

If the **expression** is True, then use **CELL NAME**

Where the expression consists of:

A **field value** (string), **operator** and **comparator** (string) that evaluates to either **True** or **False**.

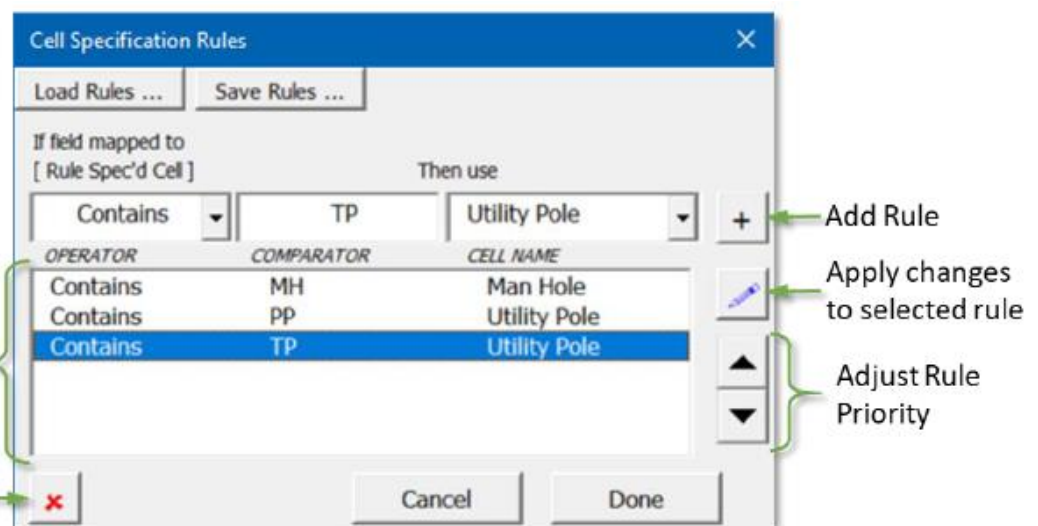
For example, if field **x** contains string **y** then place cell **z** or if field **a** is greater than the value of string **b** then use cell **c**. The following table contains example expressions and corresponding results:

Field Value	Operator	Comparator	Result
rw-4	Contains	w	True
rw-4	=	w	False
rw-4	=	rw-4	True
rw-4	Left =	rw	True
rw-4	Right =	rw	False
125-76-2281	Right =	2281	True
ABC 123	>	122	True
123.75	<	124.35	True
rw-4	<	-3	True ¹
XYZ-056	>	55	False ²
XYZ-056	<	ABC	False ³
123 75B-22	>	500	True ⁴
(space)	<	500	True ⁵
(space)	=	0	False ⁶
(space)	Is Empty	(ignored)	True ⁷

1. The > and < operators use the first number found in the *Field Value* string. Valid numbers may include a decimal point and negation symbol.
2. "XYZ-056" yields -56 when using either the > or < operators.
3. "ABC" yields 0 when using either the > or < operators.
4. "123 75B-22" yields 12375 when using either the > or < operators.
5. An empty Field Value or a non-printing character (e.g. space) will return 0 when using either the >, <, >= or <= operators.
6. The = operator uses string comparison and therefore non-printing characters will not return 0.
7. **Is Empty** returns **True** when encountering an empty field or a field containing only non-printing characters.

The rule list is processed from top to bottom. When data mapped from a record to the [Rule Spec'd Cell] field meets the rule's criterion, the corresponding cell is placed, and rule processing terminates. If no rule can be applied to the mapped data, then the user-specified default cell is used.

Remove selected rules



Import Points CE 2.0

Copyright © 2020 Bentley Systems, Incorporated.

All rights reserved. Permission is hereby granted, free of charge, to any person obtaining a copy of this software and associated documentation files (the "Software"), to deal in the Software without restriction, including without limitation the rights to use, copy, modify, merge, publish, distribute, sublicense, and/or sell copies of the Software, and to permit persons to whom the Software is furnished to do so, subject to the following conditions:

The above copyright notice and this permission notice shall be included in all copies or substantial portions of the Software.

THE SOFTWARE IS PROVIDED "AS IS", WITHOUT WARRANTY OF ANY KIND, EXPRESS OR IMPLIED, INCLUDING BUT NOT LIMITED TO THE WARRANTIES OF MERCHANTABILITY, FITNESS FOR A PARTICULAR PURPOSE AND NONINFRINGEMENT. IN NO EVENT SHALL THE AUTHORS OR COPYRIGHT HOLDERS BE LIABLE FOR ANY CLAIM, DAMAGES OR OTHER LIABILITY, WHETHER IN AN ACTION OF CONTRACT, TORT OR OTHERWISE, ARISING FROM, OUT OF OR IN CONNECTION WITH THE SOFTWARE OR THE USE OR OTHER DEALINGS IN THE SOFTWARE.

This Software package was distributed by **Bentley User Group Victoria Australia (BUGVA)**

This package can be downloaded from <https://bugva.org/vba/>